

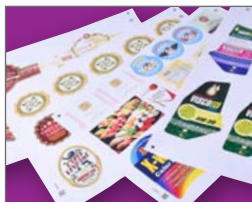
**AUTOMATED  
PRINTED SHEET  
CUTTING SYSTEM**

- DUAL FLATBED/SHEET FED DEVICE
- CUT-THROUGH & KISS-CUT
- FAST DIGITAL CUTTING & CREASING
- INSTANT QR CODE JOB RECOGNITION
- UNATTENDED PRODUCTION

**SC5000 Auto Sheet Cutter**



**1,000 SHEET  
AUTOMATED FEEDER**



# Fully automated, sheet cutting production Packaging, P.O.S. and labels. Ultra fast!



Flawless auto-feeding and faultless digital cut-through operation of any shape on up to 350 micron media, with the dual tool head delivering up to 750g of force per tool

POWERED BY  
**ColorCut Pro**



## Market leading features

- Digitally cut-through any shape sheet card item - with SmartTag retention - on up to 350 micron media, or kiss-cut sheet labels - all at up to 960mm/sec
- Digital process means no more costly dies or wasted waiting time
- Auto feeder stacks up to 1,000 sheets. Up to 330mm (13") x 485mm (19") and custom sizes - with self centring function and air bladelite separation
- ColorCut Pro - Production Studio software included
- QR\* code/Job Library retrieves associated cut files - even for mixed job batch sessions or rotated sheets
- SmartMark registration delivers incredible accuracy - enabled via included ColorCut Pro software



**Optional ColorCut Pro Server Station** seriously enhances productivity. Supplied complete with a pre-installed Windows® PC and ColorCut Pro software suite, with a flat screen monitor, mouse and keyboard. Also includes software User Licence for two additional seats.

PRODUCT ON WEBSITE

WATCH VIDEO

\*QR codes and SmartMarks are generated as part of the included ColorCut Pro software plugin which integrates with vector artwork created in Adobe® Illustrator® and CorelDRAW®

## colorCUT Sheet Label Cutting



Huge 1,000 sheet capacity stacker/feeder



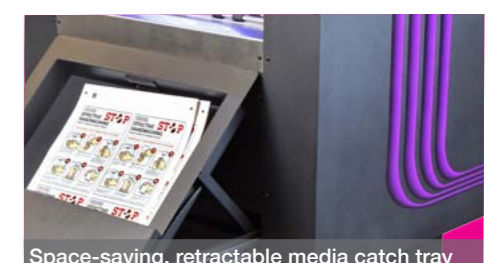
Front air blades and separating fingers assist media separation to perfectly feed every sheet



Continuous vacuum belt lifts and feeds sheets onto cutting bed ready for cutting



Dual tool cutting with dual grip feeding and revolutionary cutting strip gives perfect results



Space-saving, retractable media catch tray



Vision3 camera reads black or white QR codes to instantly retrieve associated cut files

## A revolutionary new type of automated cutter - blending flatbed and sheet fed technologies!

Perfect for both die-cutting light-weight packaging and P.O.S card projects – as well as kiss-cut sheet label production – the all new ColorCut SC5000 is an 'on demand' digital sheet cutter with no dies or setup costs. Targeted for busy print departments, seeking an affordable, high-capacity device for complete unattended cutting production, the SC5000 combines ultra-reliable feeding with an instant job retrieval system and flawless high-speed cutting.

The SC5000 blends the dual tool cutting and creasing abilities of flatbed technology with automated sheet fed functionality - all within a precision engineered, compact free-standing device with an easily manoeuvred ergonomic space saving design.

This latest addition to the ColorCut family combines many features of digital cutting and creasing taken from ColorCut's flagship flatbed range, including the high-speed functionality of its automated sheet fed models but, at a more affordable price point.

### Complete standalone operation - even with a stack of mixed jobs

In today's busy print environments, the SC5000's 8th generation Vision3 CCD camera offers an unparalleled production advantage, able to read and instantly retrieve cut files for every sheet on the fly! It can accept a mixed stack of jobs, cutting one after the other in a seamless and uninterrupted flow.

- Its 'Dual Grip' feed system holds the media during cutting, on both sides of the cutting head, enabling it to cut closer to the media edges than most other types of sheet cutter.

The revolutionary cutting strip, based on the superior cutting mats used in Intec flatbeds was developed to offer the optimal surface for both cut-through, creasing and kiss-cut work, suiting both of the production tools. With the cut sheet being in constant high-speed motion, minimal SmartTags are left in the cut lines to retain the item in the sheet - leaving a tidy and manageable stack of finished, complete sheets in the catch tray.

- The auto feeder can hold a huge 1,000 sheet capacity. In conjunction with self-centring guides and fanned air blade separation, each sheet is perfectly presented into the cutter.
- ColorCut Pro Production Studio software is supplied as standard and offers remarkable digital productivity for the designer and machine operator alike.

### High-capacity and ultra-reliable feeding

The SC5000 has been designed to provide unattended operation with particular attention paid to the feeding system to ensure class leading performance for card, vinyl labels or even tricky laminated sheets. The SC5000's auto feeder accepts up to 1,000 sheets, which automatically raises and lowers as required. To prevent sheets curling, as a result of a constant air flow to the sides, the SC5000's uses an automatic air blade that fires a blast of air momentarily into the front of the stack just as the advanced vacuum feed belt lowers to collect the top sheet using pneumatic suction. To further provide a reliable feed, the vacuum feed belt lifts the media carrying any sheets not pre-separated by the air blade past a pair of dexterous separation fingers which dislodges them. Finally before advancing the sheet into the cutting engine, the vacuum feed belt 'jogs' briefly against the rear paper stop creating a natural curve that helps ensure that even difficult media feeds faultlessly.

### Dual tool power - digital accuracy

The digital cutting head can apply up to 750g of force individually for both the cutting and creasing tools, with their actions being controlled via the included ColorCut Pro software. In common with the entire ColorCut family, the SC5000 can be set to apply exact amounts of pressure and speed, along with total control over the application of cut, crease and perforation, of the vector artwork lines.

### Ergonomic, compact and mobile

The space-saving media catch tray slides away when not in use and the manoeuvrable stand ensures it is easily accommodated into any environment.

The 5 inch immersive touch screen control panel is housed within an articulated module which can pivot to suit the angle desired by the operator.

### Easy to use automatic job retrieval - no skilled operator required for cutting!

When creating jobs, ColorCut Pro applies an auto assigned (editable) QR code\* to each design, whilst auto-saving the cutting file to the ColorCut Pro Job Library.

Jobs with QR codes can be cut at a later date by any operator - no need to search for which file to cut - no specific computer application skills required! The SC5000 will check the QR code of each sheet, retrieve the associated cut file and proceed to cut and crease as required - even if the sheet is presented at 180°. Proceed to cut a single sheet or even thousands on an unattended run.

The Vision3 CCD camera has an 8th generation sensor with enhanced sensitivity to read even white QR codes and SmartMarks on dark media.



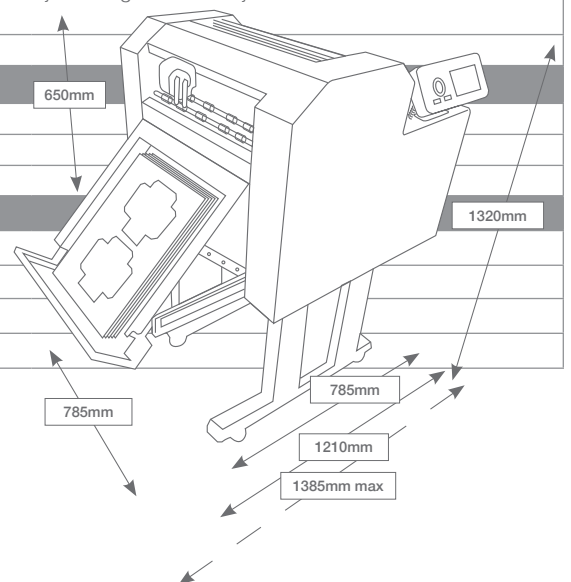
Latest 8th generation CCD camera reads positive and inverted QR codes and SmartMarks, handling mixed jobs to maintain perfect cut accuracy

# Specifications



## Intec ColorCut SC5000 Auto Sheet Cutter

| MEDIA HANDLING                        |   |
|---------------------------------------|---|
| Standard media sizes                  | A4 (210 x 297mm), A3 (297 x 420mm), SRA3 (320 x 450mm), A3+ (320 x 480mm)   |
| Custom sized label media              | Media width (min-max): 180mm x 340mm      Media length (min-max): 279mm x 485mm   |
| Media thickness                       | 0.14mm (140 micron) - 0.35mm (350 micron)   |
| Auto-sheet capacity                   | Up to 1,000 sheets for auto-sheet feed  |
| Media alignment                       | Dial adjustment with self centring guides - lockable  |
| CUTTING CONTROL                       |   |
| Mountable tools (dual tool holder)    | Blade holder - holds cutting blades; 30°, 45° or 60° for range of media types<br>Creasing tool - dual ended (wide & narrow) suitable for ≤350 micron card<br>Calibration pen - pen, plotting pen used for auto-calibration. Can be used in either mountable location  |
| Cutting blades                        | Yellow<br>Red<br>Blue<br>1mm 30° cemented carbide blade - for thin film and very soft material<br>1mm 45° cemented carbide blade - for thin card up to 0.35mm and adhesive stickers<br>1mm 60° cemented carbide blade - for thick vinyl media, sharply angled tip provides a longer cutting edge  |
| Cutting system (force)                | Contour cutter, with up to 7.60N (750gf) delivered in 190 steps programmable through Intec ColorCut Pro cutting software  |
| Mechanical / Programme resolution     | 0.01254mm / HPGL 0.025mm  |
| Maximum speed                         | 960mm/s   |
| SOFTWARE & CONNECTIVITY               |   |
| ColorCut Pro 3 – Plugin (PC)          | ColorCut Pro 3 plug-in (all features available). ColorCut Pro sends projects designed in Adobe® Illustrator® or CorelDRAW® directly to Intec ColorCut label cutter with no need to convert them to a different format. Requires: PC - Adobe® Illustrator® CS1 – CS6, CC, CC2014, CC2015, CC2017, CC2018, CC2019, or CorelDRAW® X4 - X8, 2017 - 2019 |
| ColorCut Pro 3 – Plugin (Mac)         | ColorCut Pro 3 Plugin for Mac enables the ColorCut Pro Job Library Client. Mac users add cut marks automatically to Illustrator files and assign Job numbers and QR codes. The jobs are sent to the remote ColorCut Pro Job Library on a PC for cutting. Requires: Illustrator CC2018- 2020   |
| ColorCut Pro 3 – Standalone           | ColorCut Pro 3 – Job Server version of ColorCut Pro is PC only and enables jobs created by the ColorCut Pro plugin (above) to be cut at any time, without requiring Adobe® Illustrator® or CorelDRAW® and without having to re-open the original file   |
| PC minimum specification              | 64-bit. 2 GB of RAM (4 GB recommended). Minimum display resolution: 960x830. For live preview PC must have Wi-Fi capability for direct connection to Vision3 CCD camera (USB Wi-Fi dongle included)   |
| Connectivity                          | USB (1 connection to PC is required)  |
| REGISTRATION CONTROL & JOB MANAGEMENT |   |
| Registration system                   | Vision3 - High resolution CCD vision system reads the registration marks on the media, comparing position with original digital file. Automatically adjusting cut lines to correct any scale or skew positional differences   |
| Cut position accuracy                 | +/- 100 micron  |
| Auto job recognition                  | Yes: Instant cut file retrieval, supported through QR code job recognition in conjunction with ColorCut Pro 3 software (supplied)   |
| Varied or mixed job recognition       | Yes   |
| POWER REQUIREMENTS                    |   |
| Voltage                               | AC 110-240v~, 50-60Hz, 180w,  |
| Power supply                          | 180w, 6.8A (110-220v), 3.4A (200-240v)  |
| Approvals                             | Complies with CE and RoHs directive   |
| GENERAL                               |   |
| Weight (unpacked)                     | ??kgs   |
| Power supply                          | AC 110-220V 50/60Hz, 0.5A   |
| Dimensions W x D x H                  | 785 x 785 x 1320mm (31 x 31 x 52 inches)  |
| Max' area required in use on stand    | 785 x 1385 x 1320mm (31 x 54.5 x 52 inches)   |



**Intec Printing Solutions Limited**  
 Unit 11B, Dawkins Road Industrial Estate,  
 Poole, Dorset BH15 4JP UK  
 Tel: +44 (0)1202 845 960 Email: sales@intecprinters.com  
[www.intecprinters.com](http://www.intecprinters.com)